



COLLEGIATE DIRECTIONS

11th Annual Benefit



Scholar Parent

Scholar Alumni

Thursday, September 9, 2021
A Virtual Affair • 7:00 p.m.



Congratulations CDI

Ann Marie Etergino and The Etergino Group congratulate Collegiate Directions for an amazing year of *Achieving What's Possible!*

We are honored to support your inspiring mission, your remarkable scholars and your incredible team.

Ann Marie Etergino and The Etergino Group



Ann Marie Etergino, CIMA®
Managing Director – Financial Advisor
(301) 907-2772 | annmarie.etergino@rbc.com
www.eterginogroup.com



**Wealth
Management**
The Etergino Group

Investment and insurance products offered through RBC Wealth Management are not insured by the FDIC or any other federal government agency, are not deposits or other obligations of, or guaranteed by, a bank or any bank affiliate, and are subject to investment risks, including possible loss of the principal amount invested.

© 2021 RBC Wealth Management, a division of RBC Capital Markets, LLC, Member NYSE/FINRA/SIPC. All rights reserved.

21-WG-02222 (08/21)



On behalf of Collegiate Directions, Inc's staff and Board of Directors, it is my pleasure to welcome you to CDI's 11th Annual Benefit. So much in our world has changed since we last had the opportunity to gather together in 2019, and we appreciate your presence tonight at our first virtual fundraiser.

While the pandemic has prevented us from being in the same physical space, it hasn't dampened our enthusiasm for this special event meant to celebrate the students we serve and the work we do. And considering the events of the past year and a half, tonight's celebration is more

warranted than ever.

Amid the seemingly constant change the pandemic has delivered, our commitment to our Scholars has only deepened. CDI's entire staff and tutors have continued to rise to meet new challenges and make adjustments to serve new needs.

In the best of times, our Scholars and their families rely heavily on CDI's guidance and expertise. For many CDI Scholars, the pandemic has created uncertainty that has exacerbated personal circumstances and made an already difficult journey towards college graduation all the more challenging. Knowing that, our commitment and focus have never been more intense.

For over 280 Scholars annually, our counselors are working diligently to stay atop a shifting college admissions landscape, altered standardized testing procedures, and financial aid changes, all while ensuring Scholars remain on course academically.

We are providing increased wellness counseling to Scholars to help them meet social and emotional challenges from dealing with isolation and depression to economic hardships and personal loss.

During the pandemic, our Verstandig Career Mentoring Initiative has held multiple virtual forums, webinars, and conferences to help Scholars entering the world of work in the most challenging job market young people have faced in generations.

Our School Support Program has continued working with our high school partners to reach over 3,000 local students and ensure their college counselors have the tools necessary to help them succeed.

All of this has happened because at CDI we are driven by our mission. We believe in our mission. Our work exemplifies our mission. Your generosity and support for CDI and our Scholars underscore your belief that the mission to help level the playing field and give deserving, talented, qualified students the opportunity to reach beyond circumstance, to dream bigger than preconceptions, and to achieve what is possible, is not just a noble goal, but a cause worthy of our best efforts.

We thank you again for your ongoing support.

Warmest regards,

A handwritten signature in black ink, appearing to read 'A Felix', written in a cursive style.

Amma Felix
President and CEO

BENEFIT CHAIRS

Nancy M. Carr • Cristina Ritchie Cooper • Kate Garland • Alicia S. Ritchie

BENEFIT COMMITTEE

Lulu and Clay Ackerly
Tracy Betts and
Gerardo Martínez-Freyssinier
Katherine and David Bradley
SaraLisa Brau and Bill Van Horne
Jena and Matt Carr
Kim and Alec Chester
Dory and Chad Clark
Claudia de Colstoun and
Roberto Werebe
Erin and Miki Deric
Blair Farr and Fred Underwood
Brooke and Eddie Fernandez
Barbara and John Franklin
Maxine and Jeff Freund
Diana and Stephen Goldberg
Rachel and Peter Goulding
Samantha and Justin Guilder
Catherine Hirsch
Elise Hoffman and Chris Niemczewski
Mary and Terrence Keaney

Evelyn and Michael Kitay
Meghan and Simon Latcovich
Lauralyn and Peter Lee
Alice and Mike Leiter
Melissa and Tom Loughney
Peggy Brady Marks and Josh Marks
Ayesha and Tim Molino
Annette Nazareth and Roger Ferguson
Kara and Joseph Petrosinelli
Michael Rankin and Mark Green
Elena Ritchie and Todd Sullivan
Julie Ronhovde
Rebecca Carr Rizzo and James Rizzo
Nisha and DJ Sardella
Zoe and Jeremy Sharp
Liz and Bob Shorb
Alanna and Ryan Temme
Aggie Underwood
Emily and Antoine van Agtmael
Martha and David Webb
Adele Zilber

BOARD OF DIRECTORS

Ann Marie Etergino
Board Chair
Nina W. Marks
Founder
Nancy M. Carr
Chair Emerita
Stephen A. Weiswasser
Chair Emeritus

G. Anand Anandalingam
Brian K. Bridges
I. Howard Diener
Gihan Fernando
Elizabeth W. Galvin
Lisette Garcia

Manisha Kapani
Maryanne Lavan
Jonathan B. Marks
Elise J. Rabekoff
Alicia S. Ritchie
Lee L. Verstandig

ADVISORY COUNCIL

Denise C. Buchanan
Rose H. Cohen
Susan H. Colby
Reginald S. Exum
Brooke R. Fernandez

Maxine B. Freund
Eric D. Grant
Larry A. Griffith
William E. Kirwan
Alice Leiter

Annette L. Nazareth
Rebecca Carr Rizzo
Jennifer D. Schifter
Stephen H. Whisnant

PATRONS

President

Elizabeth and Michael Galvin
Diana and Stephen Goldberg
Lockheed Martin Corporation
Nina and Jonathan Marks
Annette Nazareth and Roger Ferguson

Provost

Nancy and Robert Carr	Manisha and Roy Kapani
Sheila Cheston and Graham Dower	Maryanne Lavan
Carla Elliott-Neely	Anne and Robert Simonds
Ann Marie Etergino and James Paragamian	Toni and Lee Verstandig

Dean

Bank of America	Deepa Ollapally and Anand Anandalingam
Lisa Barry and James Gale	Elise Rabekoff and Chris Gladstone
CityBridge Foundation	Michael Rankin, TTR Sotheby's
Cristina and Aaron Cooper	International Realty
Kate and Jim Garland	Alicia and Daniel Ritchie
Harmon Foundation	Nisha and DJ Sardella
Kathryn Kincaid and Michael Lainoff	United Bank
Melissa and Tom Loughney	Mary-Jane Wagle
Marshfield Associates	Martha and David Webb

Department Chair

Trey and Megan Blanchard	Oliver Carr Company
Denise and John Buchanan	Kara and Joseph Petrosinelli
Carr Properties	Victoria and Thomas Rollins
Martha Carr	Emily and Antoine van Agtmael

Professor

Lorraine Acosta	Max and Jeff Freund
Jesse and Brian Bridges	GRF CPAs & Advisors
Sarah and Winthrop Brown	Catherine Hirsch
Dory and Chad Clark	Alice and Mike Leiter
Claudia de Colstoun and Roberto Werebe	Peggy Brady Marks and Josh Marks
Amma and Henry Felix	Linda and Peter Rich
Brooke and Eddie Fernandez	Hunter and Richard Schoenfeld
Gihan Fernando	Sharon and Matt Spielman

CDI would like to thank our corporate patrons for their generous support

PRESIDENT

LOCKHEED MARTIN



DEAN

BANK OF AMERICA



TTR

Sotheby's

INTERNATIONAL REALTY



Marshfield Associates



UNITED BANK

THE COMMUNITY BANK OF THE NATION'S CAPITAL

DEPARTMENT CHAIR

CARR
PROPERTIES

CARR
OLIVER CARR COMPANY

PROFESSOR

40grf
YEARS





COLLEGIATE DIRECTIONS

11TH ANNUAL BENEFIT

Thursday, September 9, 2021

PROGRAM

Welcome & Opening Remarks

Allison Seymour
*Emmy Award-winning anchor
WUSA9 Get Up DC*

Remarks

Amma Felix
President & CEO

Scholar Alum Speaker

Dr. Nelson Almeida
Class of 2008

Keynote Address

Wes Moore
*New York Times Bestselling Author and
former Chief Executive Officer of the Robin Hood Foundation*

Parent Speaker

Asrat Tenfeleh
Tsion Taye Class of 2016

Open Appeal for Wellness

Entertainment

Hamilton Leithauser
Indie Rock vocalist, formerly of The Walkmen

Closing Remarks

Allison Seymour



ALLISON SEYMOUR

*Emmy Award-winning anchor
WUSA9 Get Up DC*

Allison Seymour is an Emmy award-winning anchor who has been waking up viewers on morning news in her hometown of Washington, D.C. since 1999.

Allison started her career in television at the D.C. bureau of ABC News, behind the scenes, before earning her Master of Mass Communication from the University of South Carolina. She is a proud graduate of Hampton University, where she is enshrined in the Mass Media Hall of Fame.



WES MOORE

*New York Times Bestselling Author and
former Chief Executive Officer of
the Robin Hood Foundation*

Wes Moore, a combat veteran, bestselling author, small business owner, Rhodes Scholar and former CEO of one of the nation's largest anti-poverty organizations, has devoted his life's work to a basic principle: no matter your start in life, you deserve an equal opportunity to succeed – a job you can raise a family on, a future you can look forward to.

Wes graduated with an Associate's Degree from Valley Forge Military College in 1998 and then Phi

Beta Kappa from Johns Hopkins University in 2001. He earned a Rhodes Scholarship, which took him to Oxford University.

Wes went on to serve as a captain and paratrooper with the U.S. Army's 82nd Airborne, including leading soldiers in combat in Afghanistan. He also served as a White House Fellow, advising on issues of national security and international relations.

During his tenure as CEO the Robin Hood foundation distributed over \$600 million toward lifting families out of poverty, including here in Maryland.



HAMILTON LEITHAUSER

Indie Rock vocalist, formerly of The Walkmen

DC-native Hamilton Leithauser is an American singer, songwriter and multi-instrumentalist. From 2000 to 2014, he was the lead vocalist of the American indie rock band The Walkmen, with whom he recorded seven studio albums.

Leithauser embarked upon a solo career in 2014, releasing his debut studio album, *Black Hours*. In 2016, Leithauser released *I Had a Dream That You Were Mine* to widespread critical acclaim later that year. He released the studio album *The Loves of Your Life* in 2020.

SCHOLARS PROGRAM

488

Students enrolled in the CDI Scholars Program since 2005

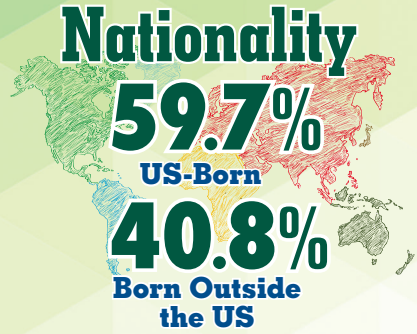
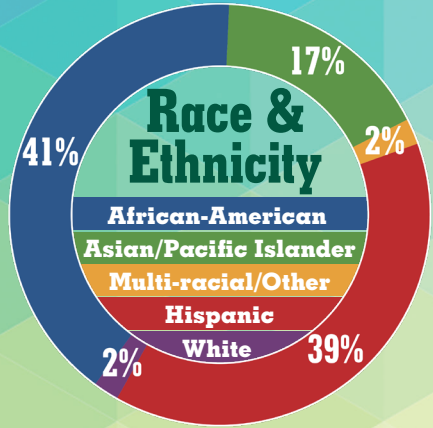


62%
Female Scholars

2% Did not designate.



36%
Male Scholars



High-School Partners:

Northwood High School
District of Columbia International School
Washington Leadership Academy



287

CDI Scholars have been accepted to more than 287 selective colleges and universities across the country.



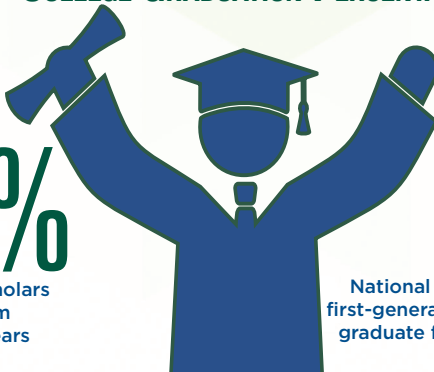
24.5%

Average ACT test score increase following CDI test prep

COLLEGE GRADUATION PERCENTAGES

CDI
97%

Percentage of CDI Scholars who graduate from college within six years



NATIONAL
16%

National percentage of low-income, first-generation-to-college students who graduate from college within six years

— Pell Institute Fact Sheet 2020

Mental Health

Like all students, CDI Scholars face a range of social and emotional challenges. Those challenges can range from academic-related anxiety and problems balancing family responsibilities with schoolwork to coping with the loss of a parent. Our mental health counselor meets with every high school student enrolled in the Scholars Program to help them address and work through these issues.



37% Only 37% of those who report symptoms of depression or anxiety say they have received counseling or therapy for mental or emotional health from a health professional in the past 12 months.

– The Healthy Minds Study 2016-17

72% 72% of students reported that obtaining mental health counseling services positively impacted their academic performance.

– Association for University and College Counseling Center Directors Annual Survey 2016-17



\$36,000

CDI Scholars receive an average of \$36,000 in college grants and scholarships vs. the national average of \$14,800



FARMS

Free and Reduced Meals

85.9%

of CDI Scholars qualify for FARMS

SCHOOL SUPPORT PROGRAM

CDI extends our work to high school college advising offices through tailored consulting focused on helping school counselors and staff improve college advising and supporting students to find their best-fit college. Our school partners are **Northwood High School, District of Columbia International School, and Washington Leadership Academy**

3,011

The number of area students who will receive more comprehensive counseling through CDI's School Support Program this year



361:1

The ratio of students to one counselor in DC

369:1

The ratio of students to one counselor in Maryland

Mentorship

Through our Verstandig Career Mentoring Initiative CDI works with Scholars in college and beyond to focus on career coaching and access to workforce opportunities through experiential learning and connects Scholars with accomplished professionals in their chosen fields. The initiative includes a soft skills curriculum based on the following core competencies:

- Career Management
- Oral/Written Communication
- Leadership
- Professionalism/Work Ethic
- Digital Technology
- Intercultural Fluency
- Teamwork/Collaboration
- Critical Thinking/Problem Solving



CDI Connect is our new online portal that connects CDI College Scholars to a professional network of mentors, fostering purposeful relationships that aid in professional growth and development.

***Congratulations to
the CDI Scholars
on your***

achievements this year



**Marshfield
Associates**

www.marshfieldinc.com

LET US PUT OUR EXPERIENCE TO WORK FOR YOU

With over 180 years of excellence in service, we remain a trusted financial partner in our communities.



*The Community Bank of
The Nation's Capital*

Learn more at BankWithUnited.com
Member FDIC



CDI College Acceptance and Matriculation List, 2007 – 2020

American University* • Amherst College • Babson College • Barnard College • Barry University • Boston College* • Boston University • Bowdoin College • Brigham Young Univ. • Brown University* • Bryn Mawr College* • Canisius College • Carnegie Mellon Univ.* • Case Western Reserve • Catholic University • Cedar Crest College • College of the Holy Cross • College of William & Mary • Colby College • College of Wooster* • Colgate University* • Colorado College • Columbia University* • Dartmouth College • Connecticut College • Cornell University* • Daemen College* • Denison University • Dickinson College* • Drexel University • Duke University • Elon University • Emory University • Fairfield University • Franklin & Marshall College • Frostburg State Univ.* • George Mason Univ. • George Washington Univ. • Georgetown University • Georgia Inst. of Tech. • Gettysburg College* • Goucher College* • Guilford College • Hamilton College • Harvard University • Harvey Mudd College • Haverford College* • Hofstra University • Hollins University* • Hood College • Howard University* • Ithaca College • James Madison Univ. • Johns Hopkins Univ. • Juniata College* • Kalamazoo College • Kenyon College • Lafayette College* • Lehigh University* • Loyola University* • Marymount University* • McDaniel College* • MIT* • Middlebury College • Morehouse College • Mount Holyoke College • Muhlenberg College* • New York University • North Carolina A&T • Northwestern University • Northeastern University* • Notre Dame of Maryland University* • Oberlin College • Occidental College • Ohio State University* • Penn State Univ. • Pitzer College • Pomona College • Princeton University* • Randolph-Macon College* • Rensselaer Polytechnic • Rice University • Rutgers University • Scripps College* • Simmons College • Smith College • Spelman College • Stanford University • St. Mary's College* • Stevenson University • SUNY Oswego • Sweet Briar College • Syracuse University • Temple University* • Towson University* • Trinity College (CT) • Trinity Washington University (DC)* • Tufts University • Univ. of Chicago* • Univ. of Mary Washington • Univ. of Maryland-BC* • Univ. of Maryland-CP* • Univ. of Miami • Univ. of Michigan • Univ. of NC-Chapel Hill • Univ. of Notre Dame • Univ. of Pennsylvania • Univ. of Pittsburgh • Univ. of Richmond* • Univ. of Rochester • Univ. of Vermont • Univ. of Virginia* • Villanova University • Virginia Commonwealth Univ.* • Virginia Tech Univ. • Washington College* • Washington & Jefferson College • Washington University in St. Louis* • Wellesley College • Wesleyan University • West Virginia Univ. • Wheaton College (MA) • Williams College • Xavier University of Louisiana • Yale University

This list is a representative sampling. Bold text indicates colleges at which CDI Scholars have matriculated. Asterisks highlight colleges at which two or more CDI Scholars have matriculated.

Achieving What's Possible!